

# The Smart Choice in GC Consumables



## SH-GC-Columns

Shimadzu offers a broad range of columns, suitable for every GC/GCMS-system. Various stationary phases are available in a variety of dimensions, suitable for many different applications.

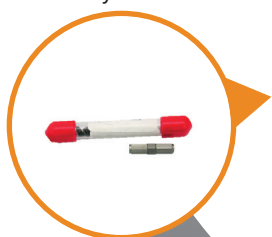
### SH-GC column line-up:

- **SH-I** Superior inert, high performance columns
- **SH** Robust and reliable general purpose columns
- **MetalX** Metal column for high temperature applications
- **Dedicated Columns** for specific use, 1614, CLP, BAC, WAX, ...
  - PLOT Columns
  - Fast GC Columns
  - Guard Columns



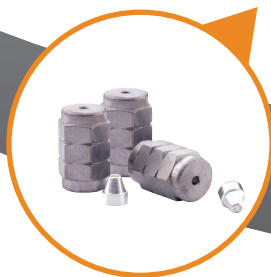
## Genuine Spares and Accessories

**Shimadzu approved quality** – valves, connectors, nuts ... and further parts from the original instrument manufacturer help you to ensure the best function of your instrument.



### Gas Filter

Impurities in gases, such as hydrocarbons, moisture and oxygen, can contaminate the gas line and instrument, cause column degradation and affect the accuracy of your analytical results, which may lead to instrument downtime. Even when using high-purity gases, contaminants may result from pressure regulators or other connections in the gas line. Therefore, an additional gas filter is essential to **ensure highest security and performance**.



### Ferrules and Unions

Shimadzu provides an array of connection types to use in the GC, each selected to ensure the best connection solution is achieved. The correct selection of the connection type will eliminate dead volumes, leaks during temperature cycling and problems with mismatched tubing sizes.



### Inlet Septa

Low-bleed septa are not completely free of bleeding. The type of bleeding that occurs varies with the septa, and results in different patterns on chromatograms. Therefore, Shimadzu septa are selected to contribute to low bleed and optimum sealing for many injections.



# Shimadzu Consumables for GC/GCMS Analytics

## The One-Stop-Supplier for all Your Needs

### Inlet Liner

The GC inlet liner is where the sample is introduced and vaporized into the gaseous phase. The geometry of each Shimadzu inlet liner is important and the correct choice of inlet liner can significantly improve the chromatographic performance. Inlet liner deactivation and quartz wool quantity and position are essential to ensure reproducible and accurate sample introduction of each sample type.



### Syringe Filter

Syringe filters provide reliable filtration for a range of laboratory applications, including the preparation of samples for gas chromatography (GC). They are available in a range of pore sizes and materials to ensure compatibility with a variety of samples.



### GC Vials and Caps

Shimadzu offers a broad range of vials and caps for GC/GCMS and Headspace applications. You can either assemble your set of vials and caps according to your demands or choose from pre-assembled kits. The portfolio covers vials for all needs, ... from certified GCMS vials, via standard vials to accessories like vial-boxes and crimping-tools.



### Syringes

Shimadzu syringes for both manual and autosampler offer a superior performance, with an improved durability, precision and accuracy.



### SPME

Solid Phase Microextraction (SPME) is a solvent-free sample preparation technology. The fibers and arrows are coated with a sorbent, which extracts the analytes of interest from the sample. Shimadzu offers a wide variety of SPME fibers and arrows based on the **SMART-technology** of our **AOC-6000plus autosampler**, suitable for a broad range of applications.



Find our full portfolio of columns and accessories  
[www.shimadzu.eu/columns-and-consumables](http://www.shimadzu.eu/columns-and-consumables)



Find all products 24/7 in our Webshop  
[www.shimadzu.eu/webshop.html](http://www.shimadzu.eu/webshop.html)

# Our TOP recommendations of GC/GC-MS products

## GC/GC-MS Columns

Description	Phase	Film Thickness (µm)	Length (mm)	Inner diameter (mm)	P/N
High-Performance Column; non-polar	SH-I-5MS	0.25	30	0.25	221-75940-30
General-Purpose Column; non-polar	SH-5MS	0.25	30	0.25	221-75855-30
High-Performance Column; medium polar	SH-I-624Si MS	1.40	30	0.25	221-75962-30
General-Purpose Column; polar	SH-PolarWax	0.25	30	0.25	227-36305-02
High-Performance Column; medium polar	SH-I-17Si	0.25	30	0.25	221-75916-30



## Gas Filter

Description	Filter	P/N
SH Gas Filter Kit - GC-FID/FPD	one Oxygen/Moisture/Hydrocarbon filter for Carrier gas, two Hydrocarbon/Moisture filters for H2 and Air	227-37036-01
SH Gas Filter Kit - Carrier Gas - GC-MS	one Oxygen/Moisture/Hydrocarbon Helium-specific filter	227-37034-03



## GC/GC-MS Accessories

Description	Content (pcs.)	P/N
<b>Accessories-Kits</b>		
GC - Consumables Kit	Assortment of: 10 µl Syringe; Graphite Ferrules 0.5; Premium Green Septa; Deactivated Inserts with Wool for Split and for Splitless; O-Rings	227-35012-11
GCMS - Consumables Kit	Assortment of: 10 µl Syringe; Graphite/Vespel Ferrules 0.4 and 0.5; Premium Green Septa; Deactivated Inserts with Wool for Split and for Splitless; O-Rings; Stainless Steel Nut	227-35013-11
<b>Septa</b>		
Premium Green Injector Septa	max. Temp. 350 °C	227-35004-01
<b>Syringe</b>		
Syringe, for AOC-30i/20i/20s	10 µl volume	221-34618
<b>Liner</b>		
Deactivated Liner	with wool for split	227-35007-01
Deactivated Liner	with wool for splitless	227-35008-01
<b>O-ring</b>		
O-ring	for insert	227-35036-01
<b>Ferrules</b>		
GC-Ferrules	Graphite; 0.10-0.32 mm ID; max. Temp. 450 °C	221-32126-05
GC-MS Ferrules	Graphite/Vespel GVF-04; 0.10-0.25 mm ID; max. Temp 350 °C	670-15003-03
GC-MS Ferrules	Graphite/Vespel GVF-05; 0.32 mm ID; max. Temp. 350 °C	670-15003-04



## Vials

Description	Volume (ml)	Cap	Septum	Content (pcs.)	P/N
Vial Kit for GC/GC-MS, certified	1.5	plastic, white	Silicone/PTFE	100	227-34002-01
Screw Vial Kit, clear glass	1.5	plastic, red centre hole	Silicone /PTFE UltraClean	100	961-10010-06
Screw Vial Kit, clear glass	4.0	plastic, black centre hole	Silicone/PTFE	100	961-10010-05
Screw Vial Kit, clear glass (Headspace)	20	magnetic, silver centre hole	Silicone /PTFE UltraClean	100	961-10010-27
Crimp Vial Kit, clear glass (Headspace)	20	alu, silver centre hole	Silicone /PTFE UltraClean	100	961-10010-29



Find all products 24/7 in our Webshop  
[www.shimadzu.eu/webshop.html](http://www.shimadzu.eu/webshop.html)



Find our full portfolio of columns and accessories  
[www.shimadzu.eu/columns-and-consumables](http://www.shimadzu.eu/columns-and-consumables)



Shimadzu Europa GmbH  
[www.shimadzu.eu](http://www.shimadzu.eu)

**For Research Use Only. Not for use in diagnostic procedure.**

The content of this publication shall not be reproduced, altered or sold for any commercial purpose without the written approval of Shimadzu.

The information contained herein is provided to you „as is“ without warranty of any kind including without limitation warranty as to its accuracy or completeness. Shimadzu does not assume any responsibility or liability for any damage, whether direct or indirect, relating to the use of this publication. This publication is based upon the information available to Shimadzu on or before the date of publication, and subject to change without notice.

© Shimadzu Europa GmbH, 2025 / Second Edition: August 2025